



The mission of the Boone County Conservation District (BCCDKY) is to promote the protection and wise use of natural resources through education and service to the citizens of Boone County. To learn more about what we do, visit bccdky.org or stop by our office to say hello!

In this issue...

- [Education](#)
 - [Soil](#)
 - [Water](#)
 - [Natural Areas](#)
 - [Upcoming Events](#)
-

Education

Conservation Kids Camp

We still have a few spots available for [Conservation Kids Camp](#)! If you know a child aged 9-12 who loves outdoor adventure, email Susan at susanbrown@bccdky.org. Camp takes place at Potter's Ranch in Union, KY from 9 a.m. to 4 p.m. each day.



Volunteers for camp are needed! Adults and responsible high school volunteers will help guide the campers through their activities. A volunteer training day will be held prior to camp. Call our office if interested!

K-12 Programs

Conservation Education curriculum is available! We offer Kentucky Academic Standard related curriculum on soils, ecosystem dynamics, watershed issues, and more! Visit our [Education](#) page for more info. Call our office to schedule a lesson for your class, scout group, or homeschool.

We also offer grants for students and teachers for projects such as pollinator gardens, outdoor classrooms, and recycling programs. Our staff will work with teachers to create curriculum and involve students as much as possible. This school year we are working with Boone County High School, Jones Middle School, and Goodridge Elementary.

Scholarships

Congratulations are in order! Bryce Wade of Burlington and Bailey Peterson of Florence have each been awarded \$1,000 in college scholarships. Bryce is pursuing a degree in Ecology and Evolutionary Biology at University of Tennessee and Bailey is pursuing a degree in Environmental Science at Northern Kentucky University. If you or someone you know are entering a 4-year conservation-related program, remember to apply next year!



Family Programs

BCCDKY has partnered with Boone County Parks Department to host at least one outdoor family program each month. So far this year, families of all ages have enjoyed calling for owls, searching for salamanders, and exploring the natural areas of Boone County! For a full list of upcoming programs, visit our [Calendar of Events](#). Registration is recommended, and all ages are welcome.

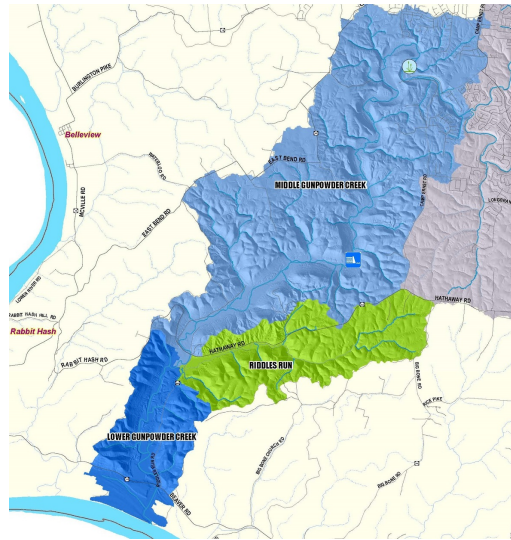
Soil

Landowner Services

Do you have a farm, forest, or stream on your property? We offer [equipment rental](#) to improve your land, as well as technical assistance opportunities. Programs such as State Cost Share, Environmental Quality Improvement Program, and Farm Dump Removal provide technical and financial support for erosion and runoff control, soil quality, and more. Visit our [Landowner Services page](#) or call our office for more information.

National Water Quality Initiative (NWQI) Program

BCCDKY is taking part in a national initiative to improve water quality. Through this program, landowners in Lower Gunpowder Creek are eligible for technical and financial support to improve their soil erosion and water quality. Many landowners and agricultural producers have already taken advantage of this program to enroll in State Cost Share and the Environmental Quality Incentive Program. If you live in the Lower Gunpowder Creek Watershed and want to learn more about the [NWQI Program](#), call our office and ask for J.T. McMullen or email jtmcmullen23@gmail.com.



Water

Watershed Initiatives

BCCDKY has partnered with other local organizations to form two Watershed Initiatives. Funded by two Clean Water Act Section 319(h) grants, Woolper Creek and Gunpowder Creek are now directly being managed for storm water runoff, flood control, and pollution control. Highlights of these projects include:

- Bioswale construction

at
Burlington
Pike
and
North
Bend
intersection

- Detention
basin
retrofits
throughout
Boone
County's
watersheds

- Dam
removal
at
Camp
Michael's

- YMCA
Camp
Ernst
Wetland

- Riparian
buffer
plantings

- Gateway
Boone
Campus
Stormwater
Improvements

To read about these projects and more, visit our [Water Resources](#) page!

Sperti River Sweep

BCCDKY & Boone County Parks are now sponsoring a cleanup at Gunpowder Creek Nature Park (Sperti Park)! Come join us for a fun and ENERGETIC cleanup! Please wear appropriate clothing - tennis shoes, jeans, tshirt, bug spray, and sunscreen. You will likely get dirty with us, but we also highly encourage it. There will be a contest, so be sure to hang out with us until noon! Please note, this will be a strenuous hike for some (see the map [here](#)). If you bring your child, please watch them carefully.

Natural Areas



Native Garden Planting

Now is the time to be thinking about what to be planting this growing season! If you are having any trouble with keeping plants in the ground or determining what is native in Boone County, give us a call or stop in the office today. We can help!

Be on the lookout for these pesky [invasive species](#)!

Prescribed Burning

Did you know that controlled burns can improve your land? Prescribed burns add important nutrients into the soil and promote the growth of healthy plants. BCCDKY recently held a workshop training land managers to safely burn grasslands, and worked with Boone County Parks Department to manage burns at Conservancy Park in Belleview and England Idlewild Park in Burlington.

Upcoming Events

For event details and registration information, visit our [Calendar Of Events](#)!

April 16th: Board Meeting

April 21st: Arbor Day

April 22nd: Earth Day

April 28th: Family Program: Wildflower Walk

May 12th: Community Activities Fair

May 15th: Watershed Update Presentation

May 19th: Family Program: Scavenger Hunt

May 21st: Board Meeting

May 27th: Family Program: Mysterious Macros

June 2nd: Explore Gunpowder Creek

June 9th: BioBlitz

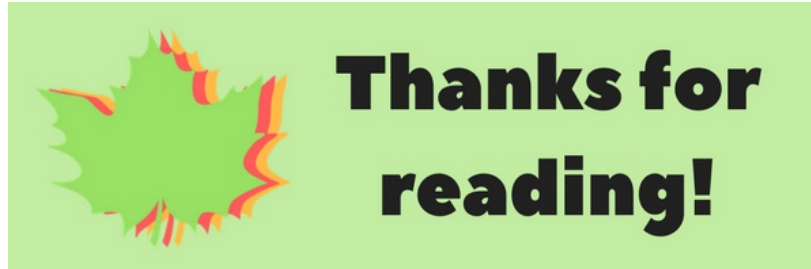
June 12th, 13th, and 14th: Conservation Kids Camp

June 16th: Sperti River Sweep

June 18th: Board Meeting

June 21st: Family Program: Geocaching

June 23rd: Boone County Farm Tour



©2018 Boone County Conservation District | 6028 Camp Ernst Road

[Web Version](#)

[Preferences](#)

[Forward](#)

[Unsubscribe](#)

Powered by
[GoDaddy Email Marketing](#)®