

A photograph of a stream flowing through a dense forest. The water is clear and flows over moss-covered rocks. The surrounding vegetation is lush and green, with sunlight filtering through the trees.

*Stream*

*Team*

*2022*

# What is Stream Team?!

- Citizen Science program – we use regular people to collect real scientific data
- Students are trained on stream ecology and data collection methods
- We will visit many outdoor locations to learn about the environment
- We will choose ONE stream to ‘adopt’ and collect data from
- This is a VERY hands-on program – you will be in the creek, you will get your hands dirty, you will touch critters, you will be outside as much as possible!
- This program is relatively new across the state... there are a few other counties that have Stream Teams, but we hope there are more in the future!

# Schedule – Meetings are on Thursdays from 5-7 p.m.

**Meetings will be scheduled according to weather and available resources.**

- March 10 – Herpetology – Boone County Nature Center
  - March 24 – Herpetology – either Middle Creek or Conservancy Park
  - April 7
  - April 28
  - May 12
  - May 26
  - June 9
  - June 23
  - July 7
  - July 28
- } Visit different streams to learn about aspects of stream ecology
- } Data collection at our adopted stream/Community Service project
- Celebration day!

- Can't remember where the next meeting is? What do you need to know before each meeting? How do I contact the staff?

<http://bccdky.org/stream-team/>

# How is the Data used?

- Previous citizen science data can be found here:
  - <https://kgs.uky.edu/wwky/main.htm>
- Our data is used by researchers and watershed planning coordinators at University of Kentucky and Kentucky Division of Water
  - Last year's Stream Team Data is available here:

<https://kygs.maps.arcgis.com/apps/webappviewer/index.html?id=2a929f196e554e20964c8f333415bafe>



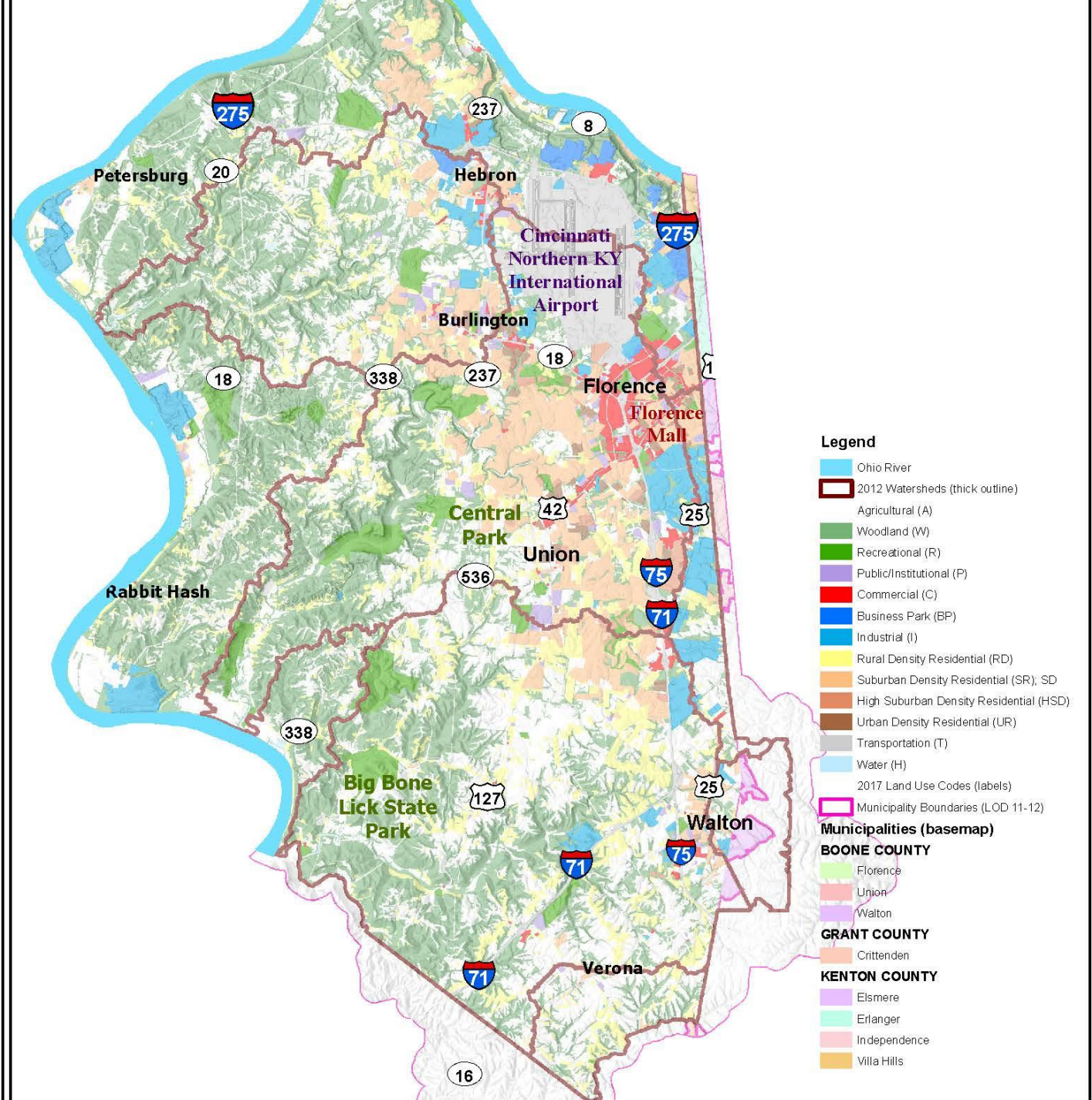
# Icebreaker

- What makes up a stream ecosystem? How do the following play a role in stream ecology:
  - Water
  - Precipitation
  - Salamanders
  - Dead logs/leaves
  - Rocks
  - Fish
  - Great Blue Heron
  - People
  - Oxygen
  - Sunlight
  - Insect larva
  - Trees
  - Algae
  - Soil

# What is a watershed?

A watershed is an area of land where all the water drains into a central body of water

The maroon boundaries in this map show the major watersheds in Boone County. They are all a part of a larger watershed: The Ohio River. How do you think land use impacts the rivers in each watershed?





# Adopt a Stream!

- Option #1  
Middle Creek



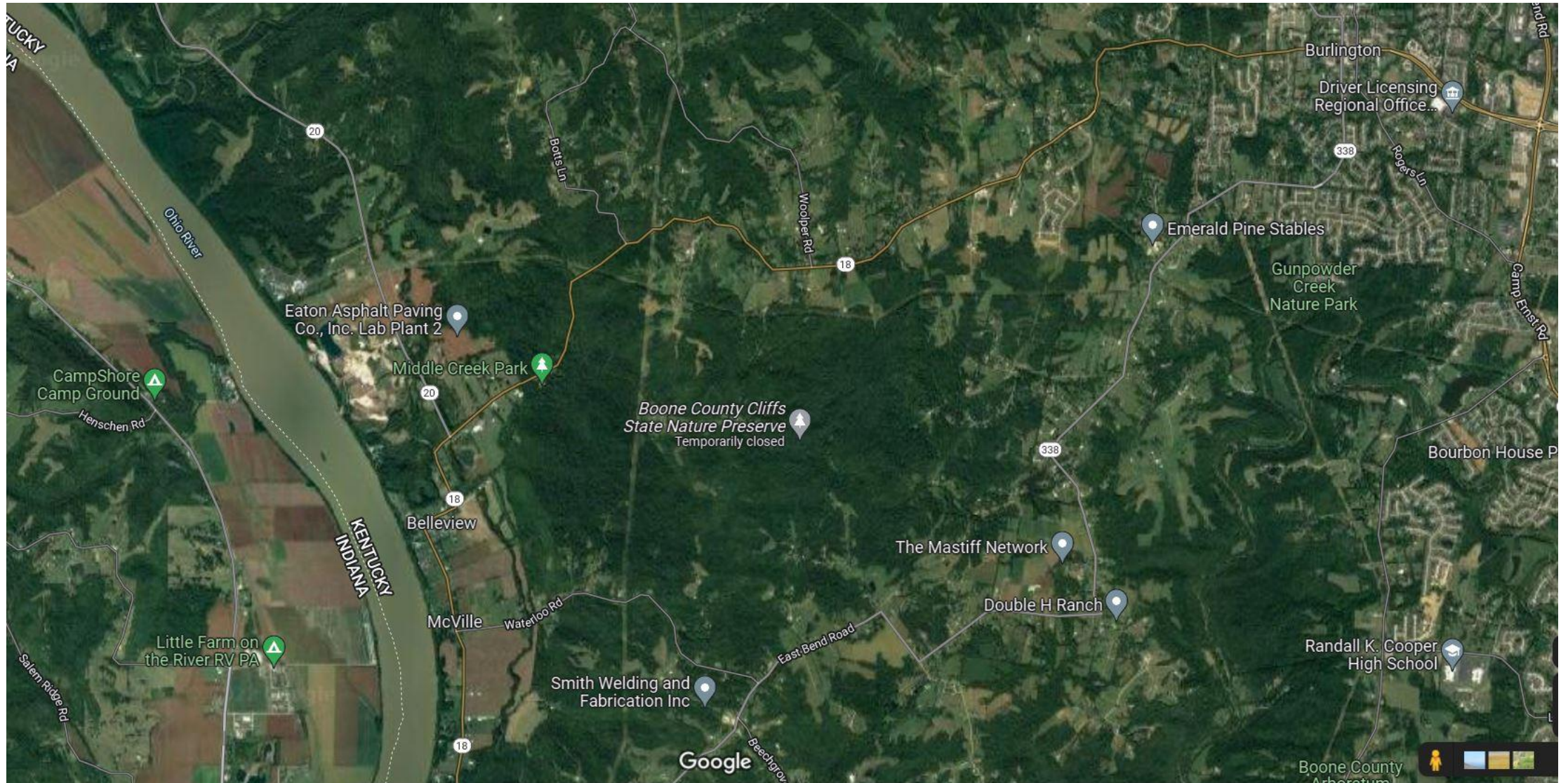


- Option #1  
Middle Creek





# Option #1: Middle Creek





## Option #2 South Fork



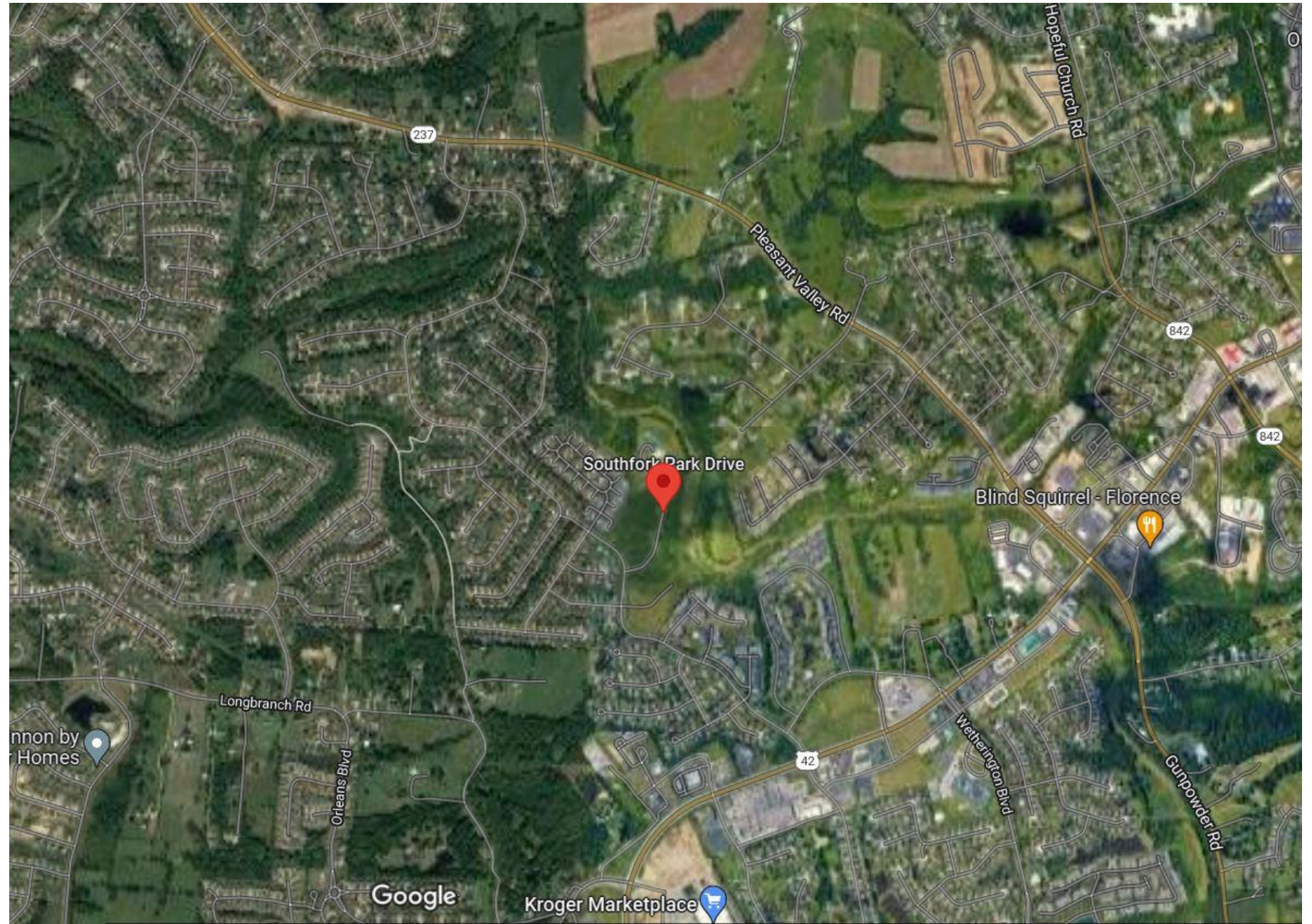


# Option #2 South Fork





# Option #2 South Fork



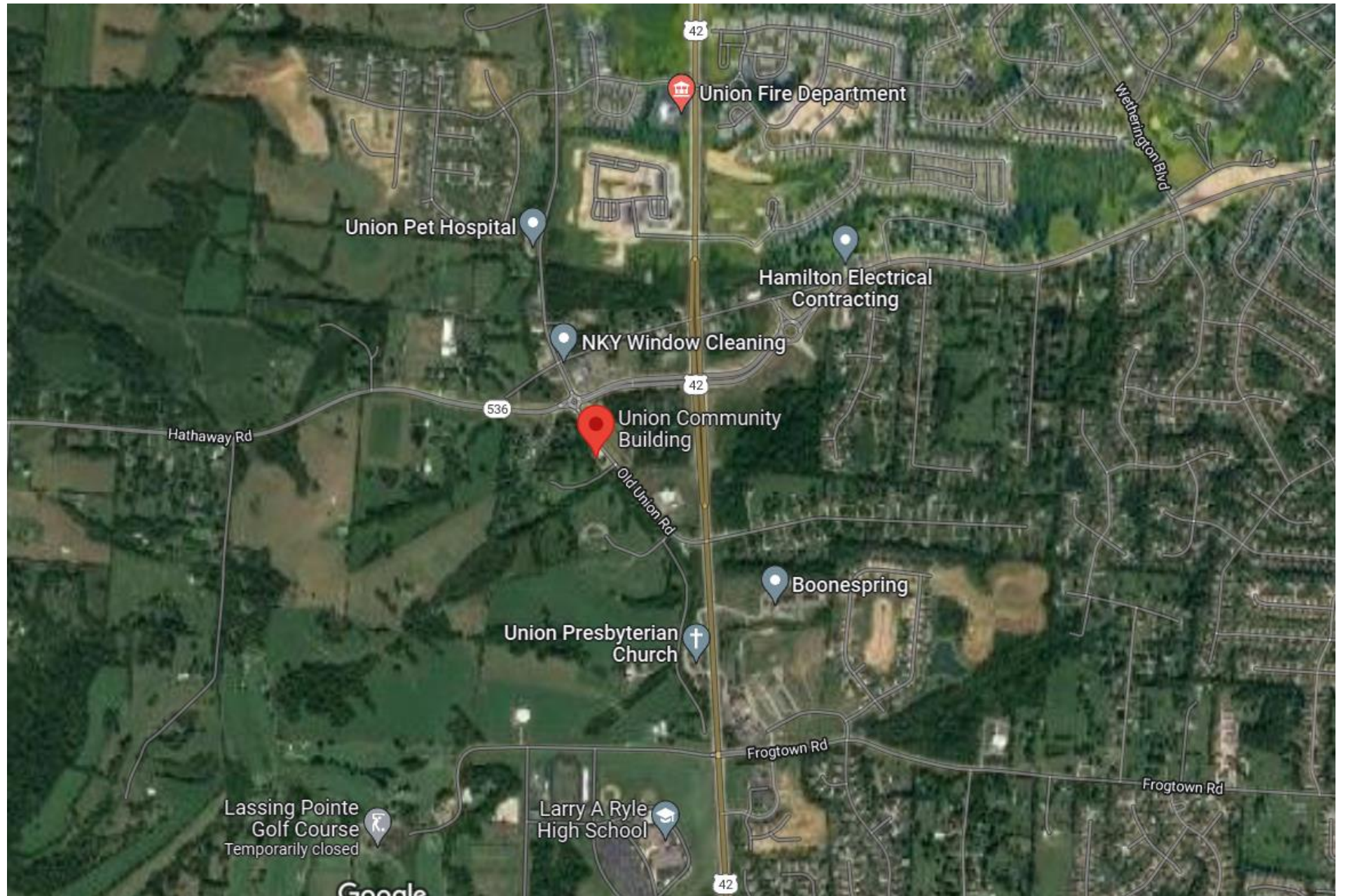


Option #3  
Fowler's  
Creek





# Option #3 Fowler's Creek





Option #4  
Boone  
Woods



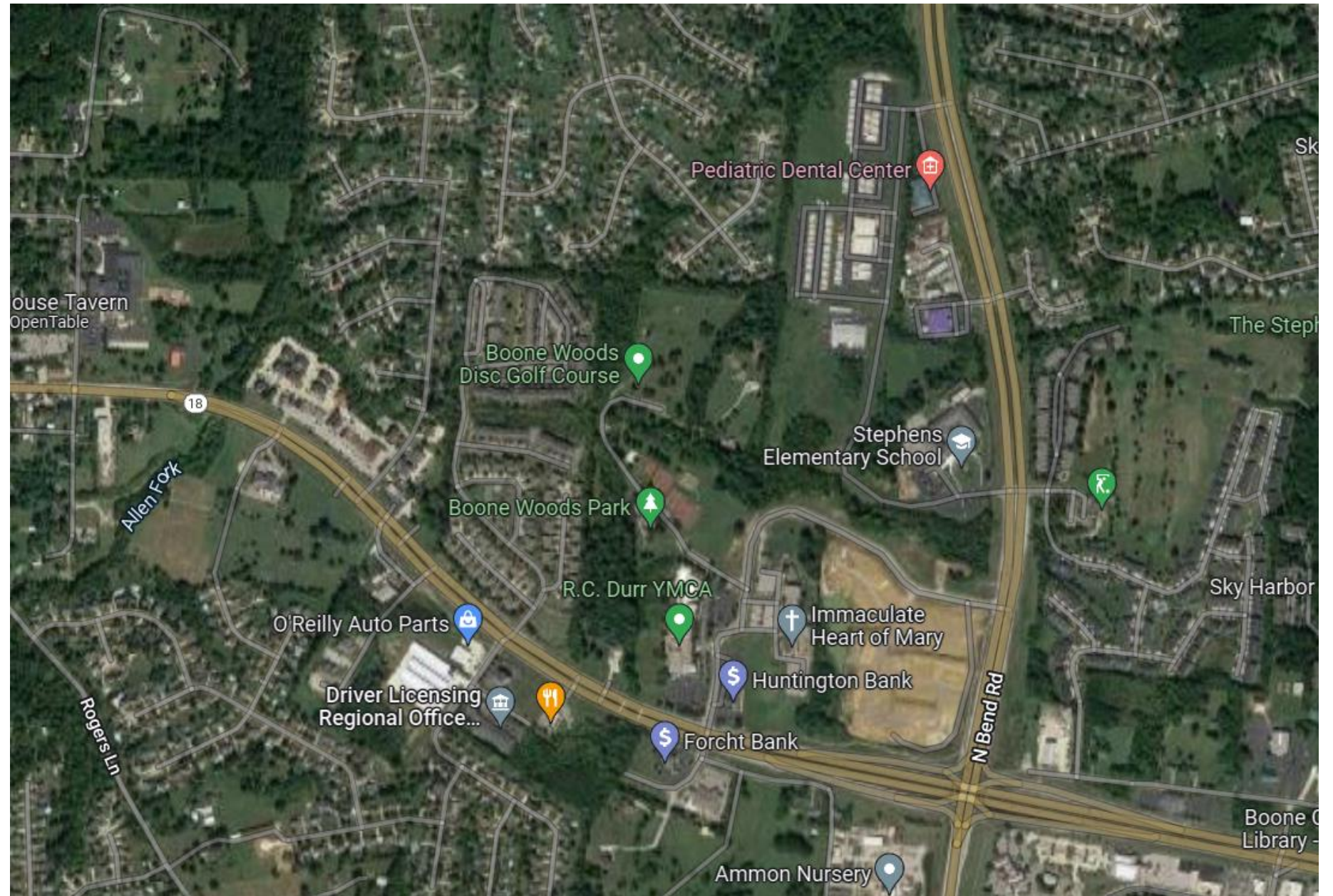


Option #4  
Boone  
Woods





# Option #4 Boone Woods



# Overview of Data Collection Methods

- Chemical Measurements
  - pH
  - Dissolved Oxygen (DO)
- Physical Measurements
  - Turbidity
  - Temperature
- Biological Measurements
  - Macroinvertebrates



# Community Service Project

Ideas????

This program will be implemented by YOU, the students!

Outside community partners and volunteers are welcome

Brainstorm:

Litter clean up, tree planting, making educational signs...

# Next Meeting

- Thursday, March 10
  - 5-7 p.m.
  - Boone County Nature Center (9101 Camp Ernst Rd, Union, KY 41091).
  - Bring mud boots!

<http://bccdky.org/stream-team-2022/>