

LONG RANGE PLAN OF WORK

Boone County Conservation District, Kentucky



2022 - 2026

262.020 Purpose of soil and water conservation district - Methods of achieving purpose. The purpose of a soil and water conservation district is to conserve and develop all renewable natural resources within the district. In so doing, the district is authorized to undertake, sponsor, or participate in projects and activities which promote the conservation, development, maintenance and use of the land, water, trees and other renewable natural resources of the district. Such projects and activities shall include but not be limited to conservation practices on agricultural lands, the control of soil erosion, retardation of water runoff, the construction of flood prevention and control reservoirs, the maintenance of flood plains, the promotion of projects to assure an adequate municipal, industrial and agricultural supply of water, watershed stabilization, the avoidance and abatement of sedimentation and pollution in streams and other bodies of water, forestation and reforestation, the establishment of parks and outdoor recreation areas, the protection of open space, greenbelt areas and scenery, the preservation of wilderness areas, the protection of fish and wildlife, working for the location of highways, industries, housing developments, airports and other structures as are consistent with the district's objectives and will offer the least possible interference with the conservation and best multiple use of the renewable natural resources, and all other activities consistent with the total natural resources development of the district. History: Amended 1968 Ky. Acts Ch. 64, sec. 1. -- Recodified 1942 Ky. Acts Ch. 208, sec. 1, effective November 1, 1942, from Ky. Stat. sec. 42i-2.



INTRODUCTION

The Mission of the Boone County Conservation District (BCCDKY) is to promote the protection and wise use of natural resources through education and service to the citizens of Boone County, Kentucky.

In just the last couple of years Boone County has seen an enormous surge in development particularly around the Airport and Union areas of the county. This growth brings many benefits to the community but also brings many challenges. As population and infrastructure expands, our community experiences loss or degradation of stream, wetland, and forest resources. This can also have deleterious effects on aquatic and terrestrial wildlife populations. BCCD has been working with many partners for more than a decade to mitigate these effects through watershed planning, stream, and wetland mitigation and in some cases preservation and management of our most high-quality natural areas.

BCCDKY has determined that conservation priorities for Boone County should include planning and implementation on a watershed level. This includes stream health, soil health and stabilization, and the health and ecological integrity of our forest and wildlife resources. These priorities have been determined by interactions with the community and their concerns and interests as well as productive collaborations and partnerships with local, state, and federal agencies and organizations.

We have already begun and will continue for the foreseeable future to initiate long term projects that address identified natural resource concerns. Major initiatives that we will continue to address in this long-range plan include conservation initiatives on the watershed scale, a better understanding of our local forests and forest health, conservation and access to the Ohio River corridor and its tributaries, and comprehensive and methodical educational initiatives to encourage an informed and engaged community.

BOONE COUNTY, KENTUCKY

FOUNDED: 1798

POPULATION: 135,968

WATER RESOURCES

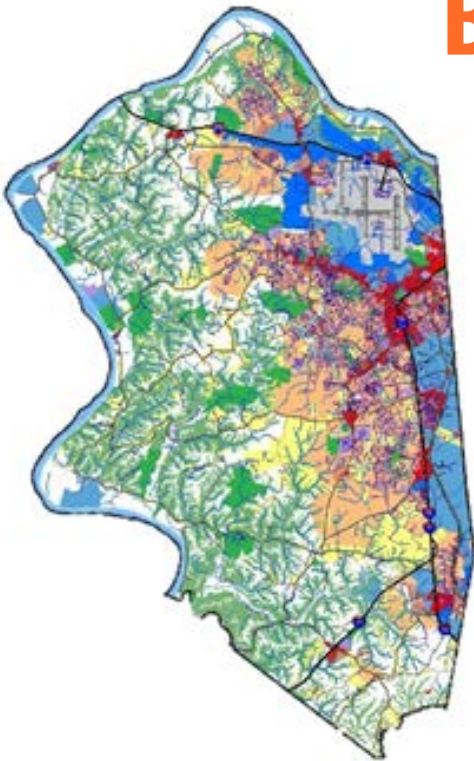
- 650 miles of stream
- 7 major watersheds
- 38 sub-watersheds
- 43 Miles of Riverfront

FOREST RESOURCES

- 44% forest cover
- 46 native tree types
- 3.76% urban tree cover
- 8.63% Dry Mesic Oak Forest
- 19.1% Mesic Deciduous Forest

AGRICULTURAL RESOURCES

- 55.36% agriculture parcels
- 24.41% prime farmland soils
- 26.1% pasture grasslands
- Over 50% of Boone County farmers learned as a child, had family in agriculture, or had been farming for 20+ years



STREAM HEALTH

Boone County is one of the fastest growing areas in the state and the country. Because of the unique topography, most of this development has taken place in the sensitive headwaters of our stream systems in the eastern side of the county. Hydromodification and poorly mitigated storm water runoff from past development and rapid present growth have become a major threat to the health of these streams as well as adjacent built infrastructure. The Boone County Conservation District has been working in the Gunpowder and Woolper Creek Watersheds for many years to improve the condition of these streams and/or prevent further degradation. We have completed comprehensive watershed plans approved by KDOW and the USEPA in each of these watersheds to gain an understanding of the existing problems and threats and to implement cost effective solutions to these problems. BCCDKY will continue to work with local partners to implement these plans but will also begin to develop plans for Middle Creek and Big Bone Creek.

Most of the stream systems in Boone County including, Gunpowder Creek, Woolper Creek, Middle Creek, Big Bone Creek, and others are entirely contained in Boone County. Recent large developments have highlighted the need to be proactive to make sure mitigation opportunities are available and efforts remain close to impact in Boone County. BCCDKY has taken the lead in identifying local mitigation projects and we have been successful in identifying multiple projects throughout the county. Over the next five years our challenge will be to keep partnerships intact and to continue to educate Boone County residents about the health of our local streams and the potential threats. Our goal is to ultimately improve stream health throughout the county, improve access for Boone County citizens, and attain designated use status for each watershed.

GOALS

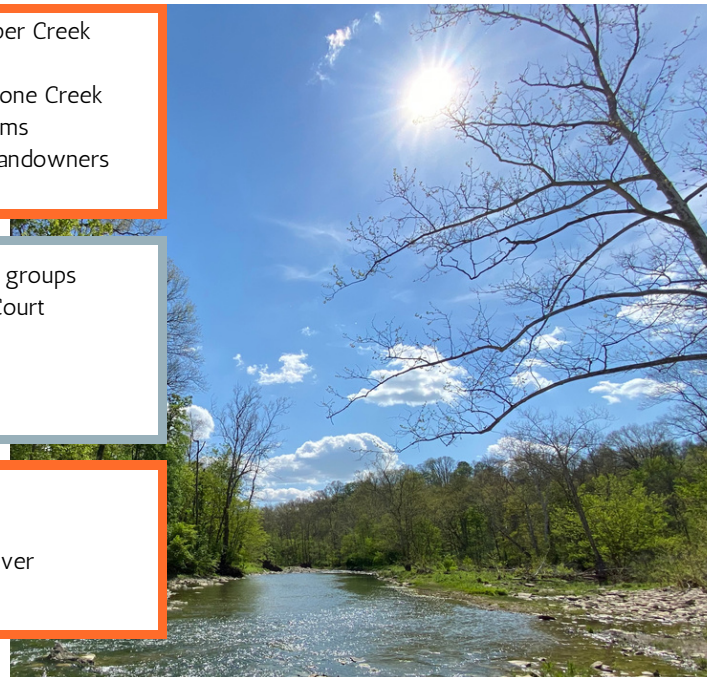
- 1 Continue to implement Gunpowder Creek and Woolper Creek watershed plans
- 2 Develop watershed plans for Middle Creek and Big Bone Creek
- 3 Increase Ohio River access and conservation programs
4. Increase technical assistance for private and public landowners
5. Restore streams to designated use

OBJECTIVES

1. Develop partnerships with other watershed planning groups
2. Continue close relationship with KDFWR and Fiscal Court
3. Conduct research for watershed plans
4. Provide leadership for BCORI
5. Increase watershed education outreach efforts

STRATEGY

1. Continue working with NPS RCTA program
2. Reengage and expand watershed plan team
3. Facilitate regular education programs on the Ohio River
4. Expand current watershed education programs



AGRICULTURE

A large part of Boone County culture is contributed to agriculture. Maintaining best management practices on farms is crucial to not only the producer, but to soil health and water quality. BCCDKY strives to provide technical assistance to Boone County's farmers, while also keeping our natural resources safe



GOALS

1. Maintain active SCS, EQIP, AWQP, Ag District, etc programs
2. Increase technical assistance to public and private landowners
3. Increase education and field days for agricultural producers

OBJECTIVES

1. Promote SCS, EQIP, etc programs
2. Maintain accessible online resources
3. Develop regular field days and workshops

STRATEGY

1. Update records and filing systems for AWQP
2. Update website
3. Develop committee to plan educational field days



FOREST HEALTH

The forest resource in Boone County is perhaps the most neglected, poorly managed, and under-utilized resource in the County. Approximately 60,000 acres of canopy cover, mostly in the western and northern slopes along the Ohio River and tributaries remain. Most of this canopy cover, around 39,000 acres, is small canopy, relatively young forest with low diversity and full of invasive species. Approximately 17,000 acres of medium size canopy and of decent quality remain. Only about 3000 acres or 2% of large canopy, good quality forest remain.

The benefits of a well-managed forest resource to our community include greater biological diversity, protection of valuable soil resources, abatement of stormwater runoff, and flooding to name a few. Current threats to this resource include expanding development, invasive species and disease, fragmentation, lack of management, and lack of local protection. BCCDKY is committed to raising awareness of the invaluable benefits of this resource to our community and to lead the effort with community partners to address and demonstrate improved management, conservation efforts and protection of our remaining public and private forestlands.

GOALS

1. Develop a forest management strategy for Western Boone County
2. Have an ongoing, sustainable forest research program
3. Increase technical assistance for public and private lands

OBJECTIVES

1. Develop sustainable internship program through partnerships with local universities
2. Increase outreach efforts to forest land owners
3. Develop strong partnerships with important partners, i.e. TMU, NKU, KSU and UKY

STRATEGY

1. Develop forest management workshops and education programs
2. Increase funding for student internships and required equipment
3. Continue developing and improving research methods
4. Attend or host meetings with stakeholders

OPERATIONS

As a Special Purpose Government Entity, we hold the responsibility to provide accessible service, technical assistance, conservation education and other resources related to all aspects of natural resources of Boone County to its residents. To fulfill this responsibility and improve our ability to better serve our community we have a need for expansion.

Acquisition and development of the Boone County Conservation Center, additional staffing as well as improvement of the complete employee benefit package and office space will provide us with the tools necessary to accommodate the growing needs of our community.

1. Acquire office space
2. Administer programs using our own land and facilities
3. Secure adequate staff with appropriate compensation

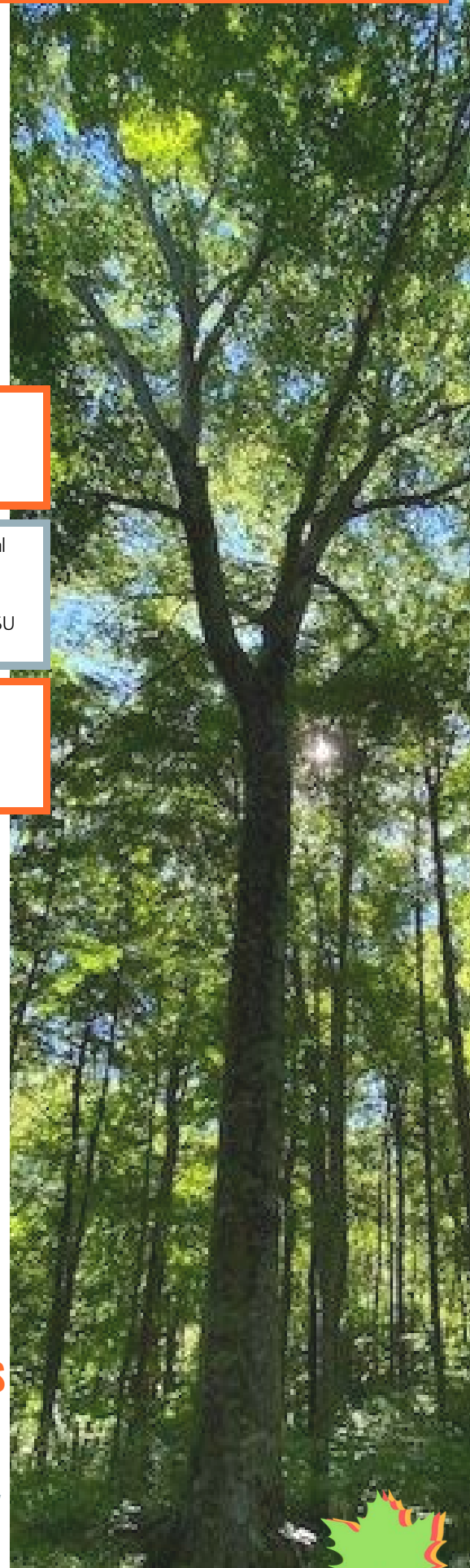
GOALS

1. Secure the deed to land appropriate for conservation education
2. Plan support facilities
3. Operate under an annual budget that is adequate and sustainable
4. Hire Forest Health Specialist, Watershed Specialist, Ag Specialist, seasonal support staff, and seasonal interns
5. Regular training for staff and board members

OBJECTIVES

1. Work with Fiscal Court to get on millage tax
2. Work with KDFWR to get property deed

STRATEGY



COMMUNITY OUTREACH



Community cooperation is key to BCCDKY's mission. We have been successful in communication with the public through monthly outdoor workshops, professional presentations, newsletters, and participation in local fairs and festivals, and we will continue to expand our work in these areas. Additionally, we desire stronger partnerships with local businesses, farmers, agencies, organizations, and governments. With these partnerships, BCCDKY will develop and host meetings, workshops, and events to promote the conservation of Boone County's natural resources.

BCCDKY is dedicated to the equitable treatment for all our staff and the communities we serve. We are committed to promoting programs that are inclusive and accessible to the entire population of Boone County, and we will seek new ways to celebrate the diverse traditions, cultures, and experiences of Boone County residents and our regional community.

EDUCATION

Education is a vital component to BCCDKY's mission. Education programs available to all ages will frame an environmentally-responsible generation, for the benefit of all Boone County residents. BCCDKY strives to provide quality information and valuable programs to our local schools, business, and communities.

GOALS

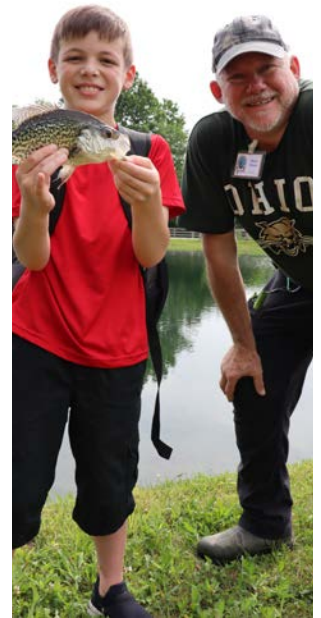
1. Increase awareness of our resources in the general community
2. Be considered a conservation resource hub for the agricultural community
3. Expand the reach of our youth leadership programs
4. Be known as a resource hub for K-12 schools
5. Expand the diversity and inclusivity of our programs

OBJECTIVES

1. Develop and publish print, online, and social media content
2. Increase presence at community events
3. Expand summer camp programs
4. Build relationships with K-12 staff
5. Build brand awareness
6. Develop important local community partners
7. Identify sources of grant funding
8. Sponsor Field Day events

STRATEGY

1. Attend or host networking events to build relationships with key stakeholders
2. Conduct assessment of educational programming
3. Create interesting and educational content for online, social, and print media
4. Utilize permanent and seasonal staff to facilitate more youth and adult programs
5. Utilize permanent and seasonal staff to attend more community events
6. Develop important partnerships



BOONE COUNTY INITIATIVES

DEVELOPMENT OF THE BOONE COUNTY CONSERVATION CENTER

A major goal of BCCDKY in the next 5 years is to develop a center for conservation education. The purpose of the center will be to offer innovative programs to Boone County and Greater Cincinnati citizens and educators. To achieve this goal, we will continue to work toward the following objectives:

- Identify and seek to acquire a property with key features for a conservation center.
- Continue multiple educational programs focused on local conservation issues for different interests and age levels.
- Initiate conservation planning and projects that demonstrate sound conservation principals.
- Restore key ecological features to improve biodiversity and support educational programs.
- Promote the appreciation of our wildlife heritage and good land stewardship.
- Encourage community involvement by providing diverse and well-organized programs that highlight local conservation issues.
- Build collaboration throughout the community with schools, local sportsman groups, universities and local, state, and federal agencies.



BCCDKY is currently working with Kentucky Department of Fish and Wildlife to potentially use a property purchased in the Middle Creek for stream mitigation referred to as the "LIM Property". The LIM Property is approximately 3.5 miles from Burlington just off East Bend Road. The property is adjacent to Boone County Cliffs State Nature Preserve and totals approximately 305 acres. Natural features include good quality forest cover, with approximately 75 acres of large canopy forest, unique geological features created by past glacial activity, and access to over one-half mile of Middle Creek, as well as many smaller tributaries and wetland seeps. These quality natural features and accessibility will allow BCCDKY to provide excellent conservation programs for children and families, hands-on technical training for college and university students, and field days and workshops for private landowners in an easily accessible and centralized location. BCCD is currently in discussions with KDFWR Stream Mitigation Team to use this property for this purpose.

BOONE COUNTY OHIO RIVER INITIATIVE (BCORI)

The Ohio River was and remains one of the most iconic natural features in the United States, particular in the east. It provided access to a new frontier and seemingly unlimited resources for a growing nation. The Ohio, even today, is essential to our nations commerce but also can provide immense opportunities for recreation and natural resource conservation. In 2020 BCCDKY partnered with The Boone Conservancy to create the Boone County Ohio River Initiative (BCORI) and to lead local partners to highlight this beautiful river for its ecological, conservation, recreation, and economic value and to create more access and opportunity for our local citizens. BCORI was awarded a technical service grant from National Park Service (NPS) in 2021 and will be working with them over the next several years to develop a framework to move forward with this effort. The intention is to eventually connect with regional partners to realize the full potential of the Ohio River for our community.

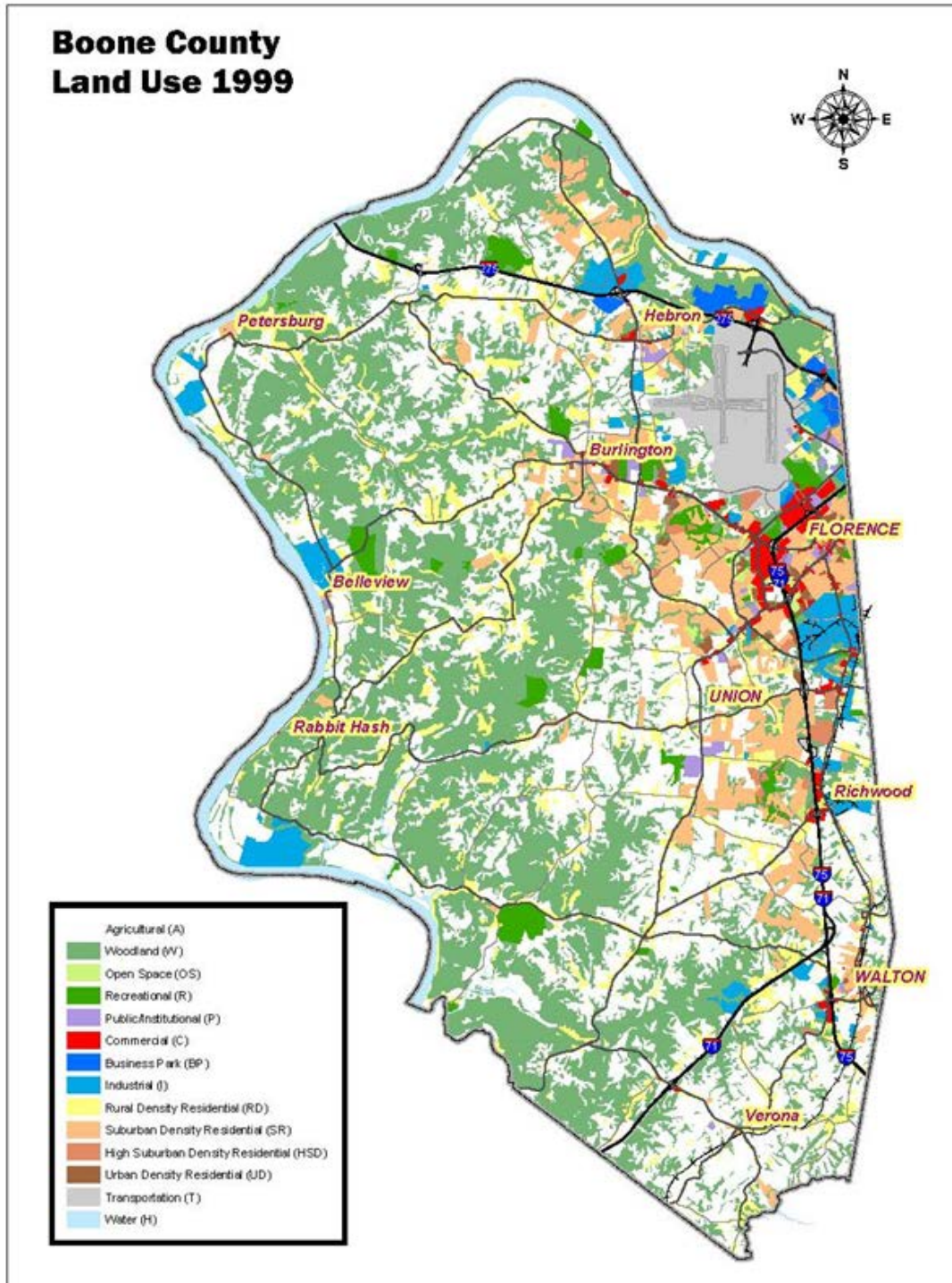


BOONE COUNTY
KENTUCKY



BOONE COUNTY MAPS

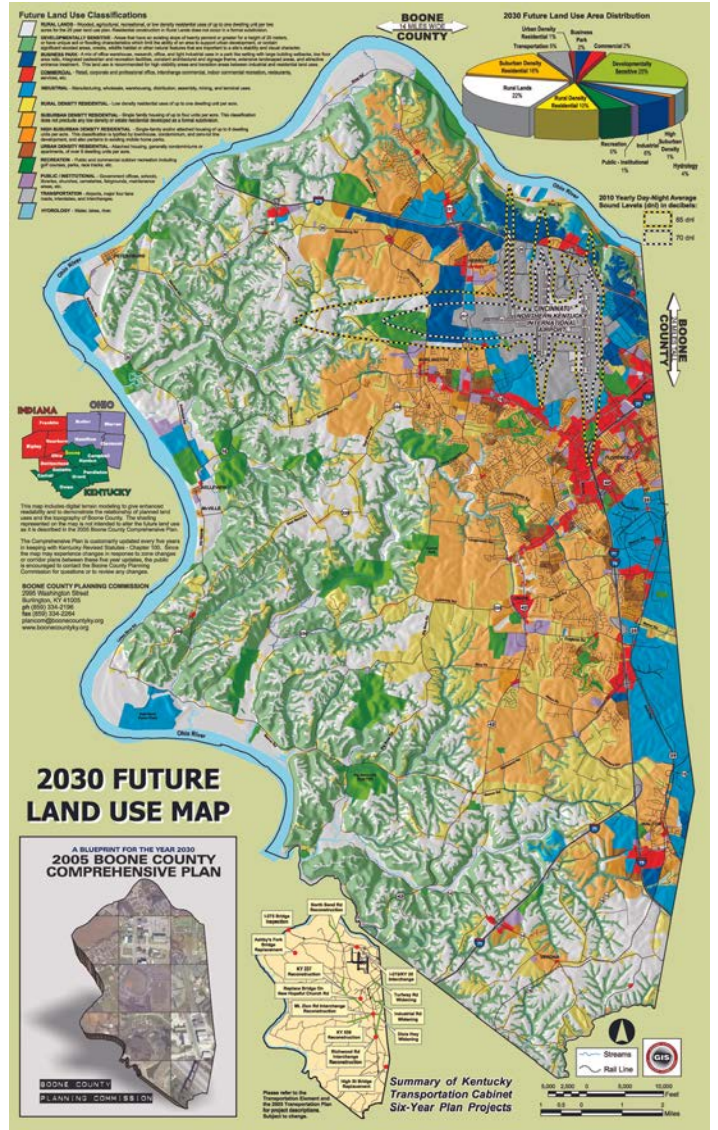
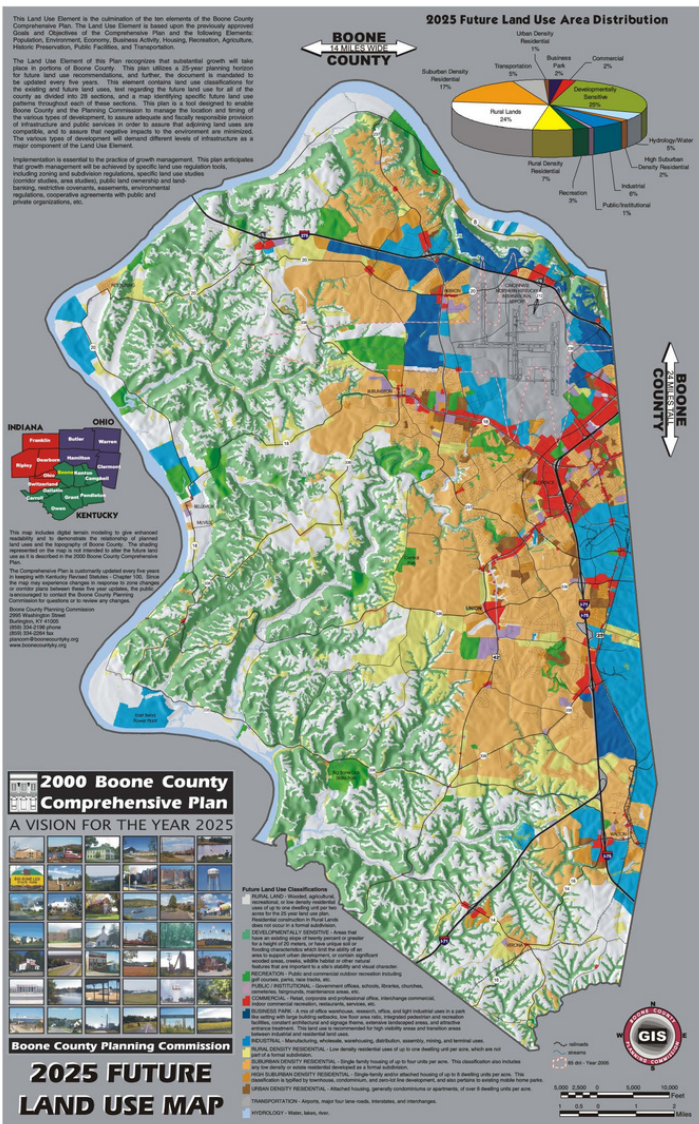
QUICK LOOK BACK



BOONE COUNTY MAPS

AND INTO THE FUTURE

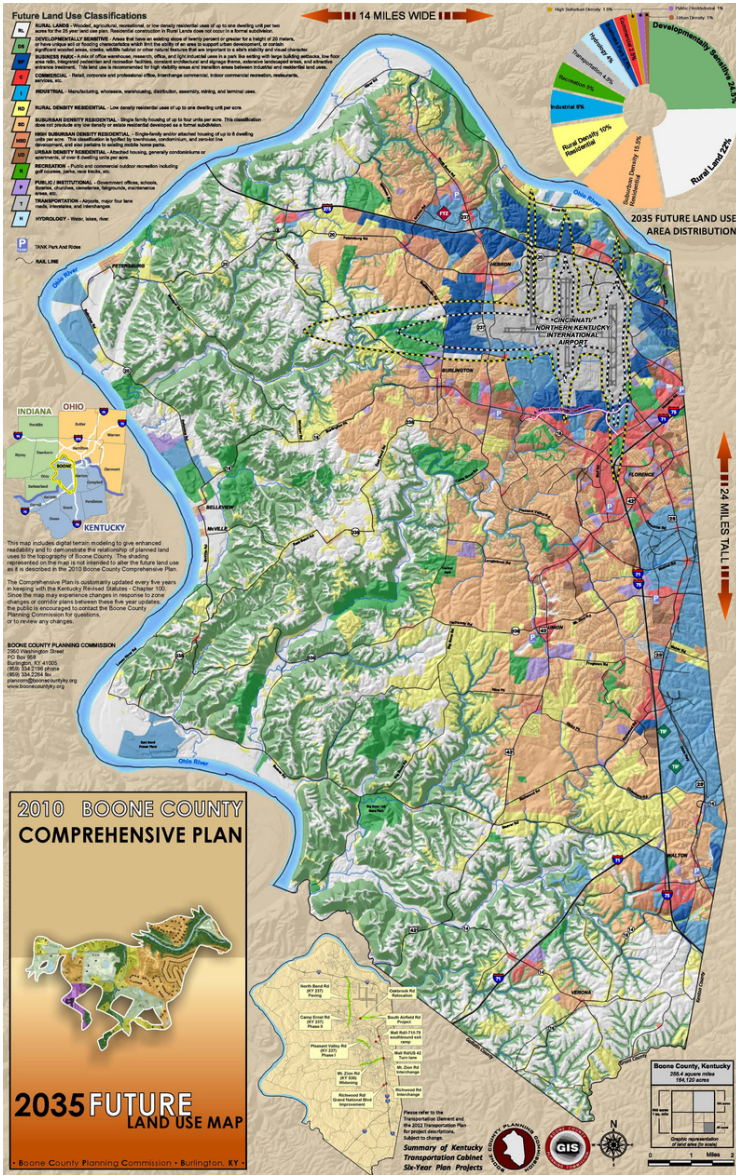
2025



2030

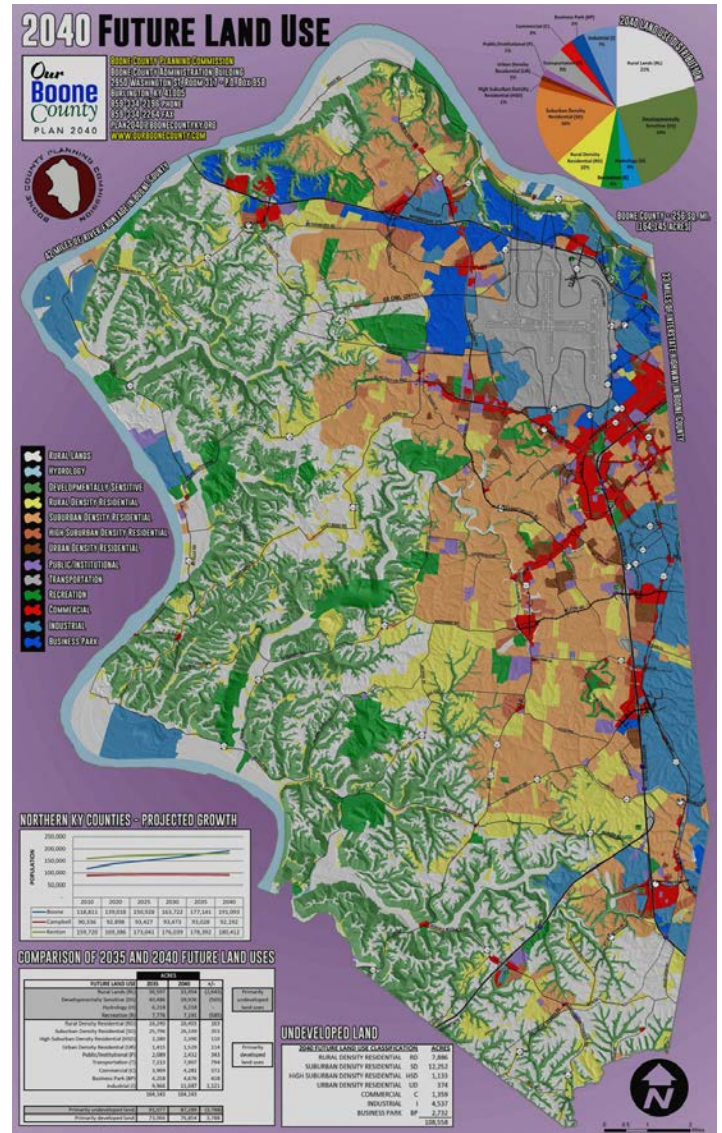


BOONE COUNTY MAPS



2035

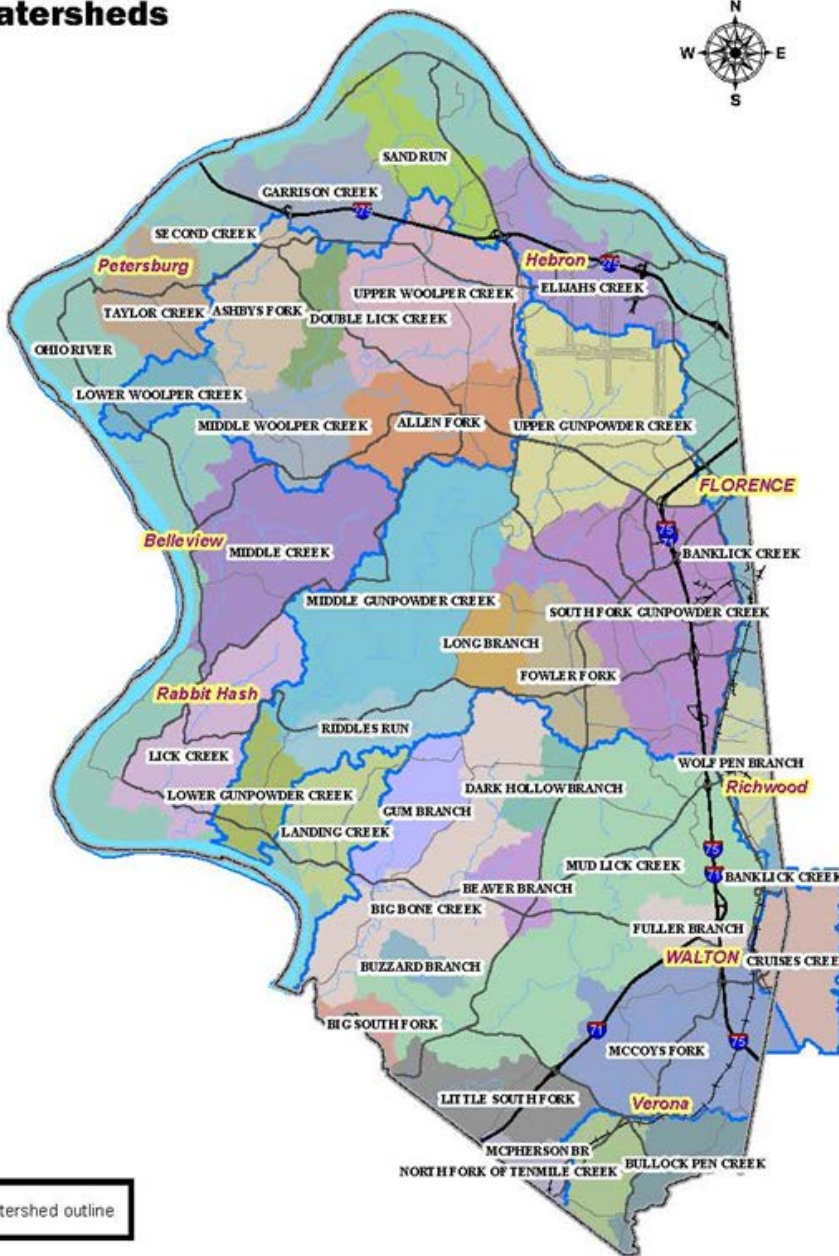
2040



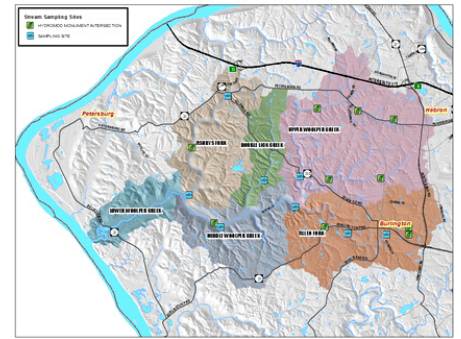
BOONE COUNTY MAPS

WATERSHEDS

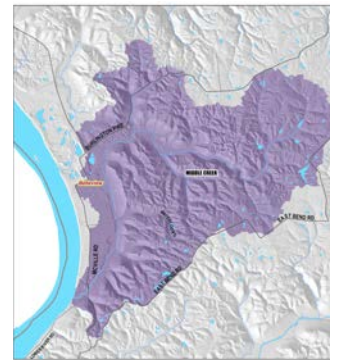
Boone County Subwatersheds



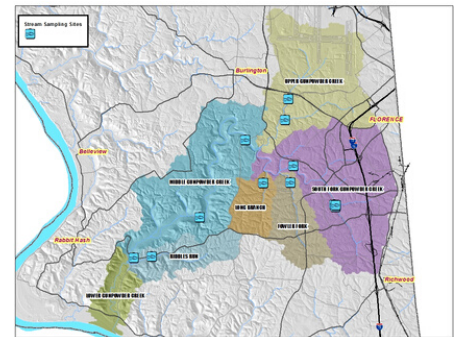
WOOLPER CREEK WATERSHED



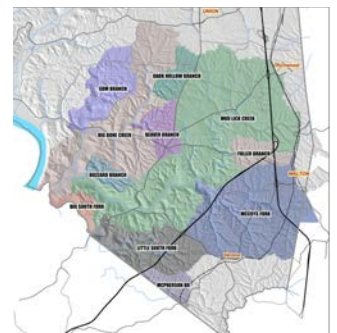
MIDDLE CREEK WATERSHED



GUNPOWDER CREEK WATERSHED

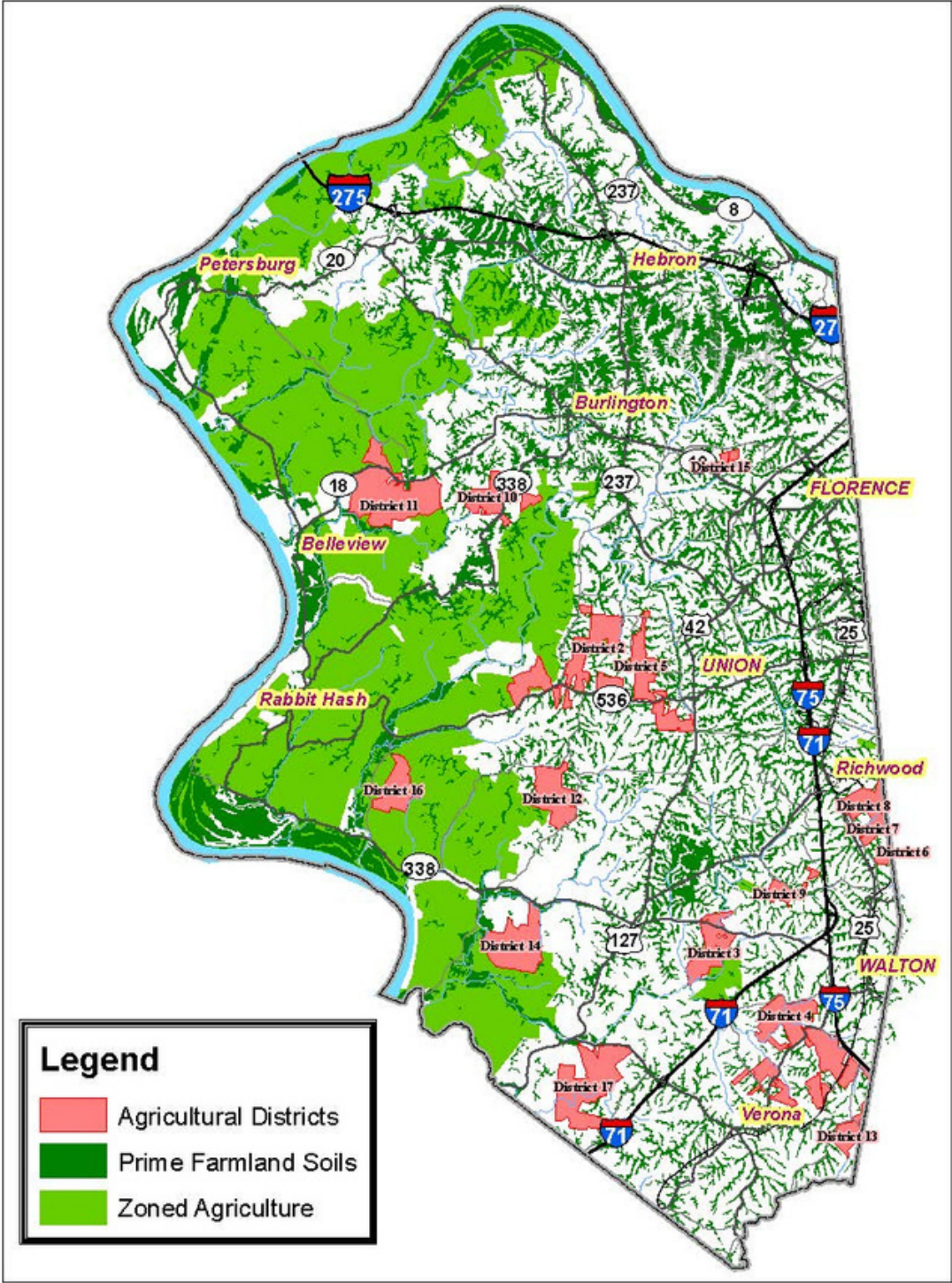


BIG BONE CREEK WATERSHED

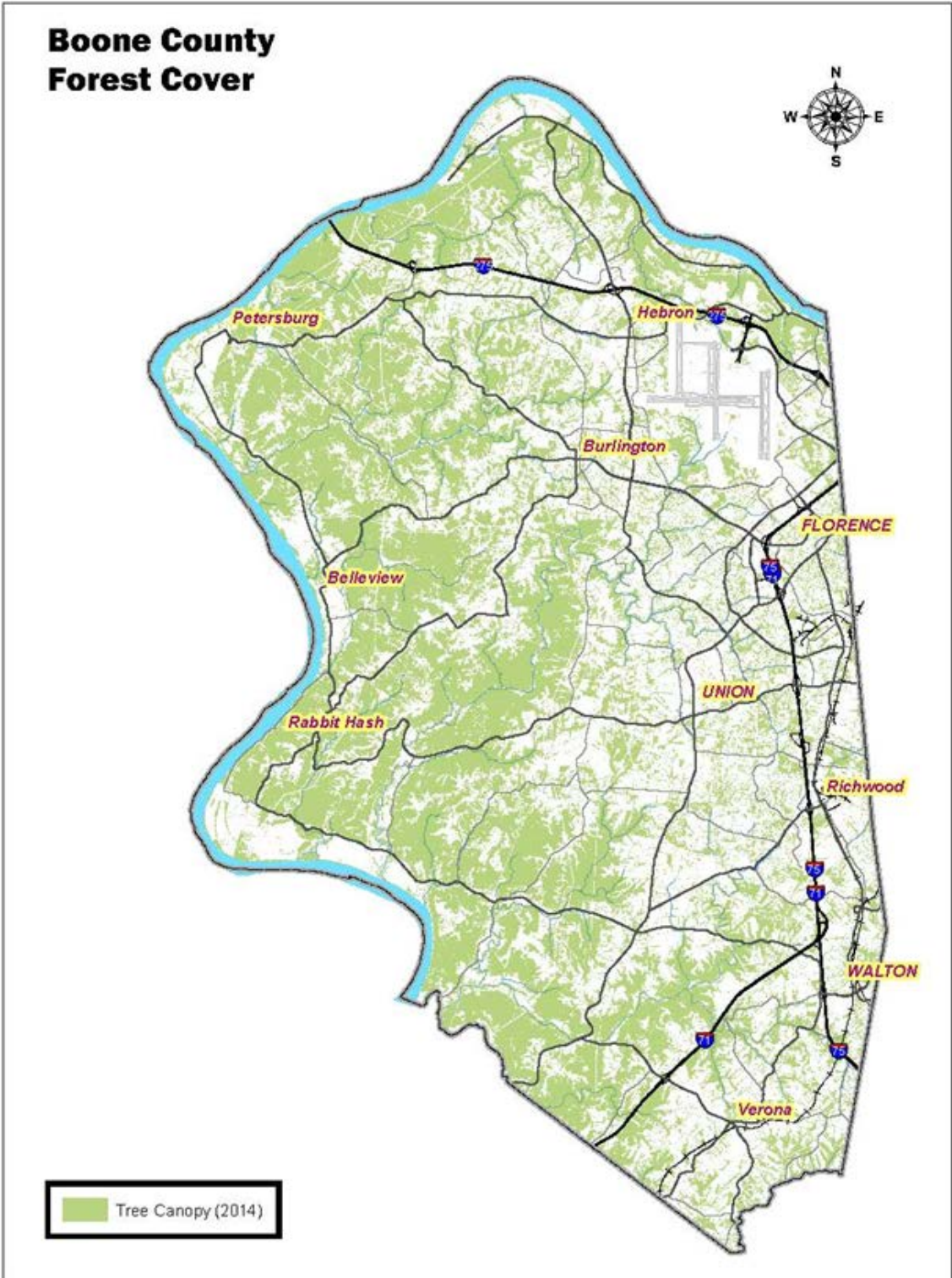


BOONE COUNTY MAPS

AGRICULTURAL DISTRICTS AND FARMLAND SOIL



BOONE COUNTY MAPS



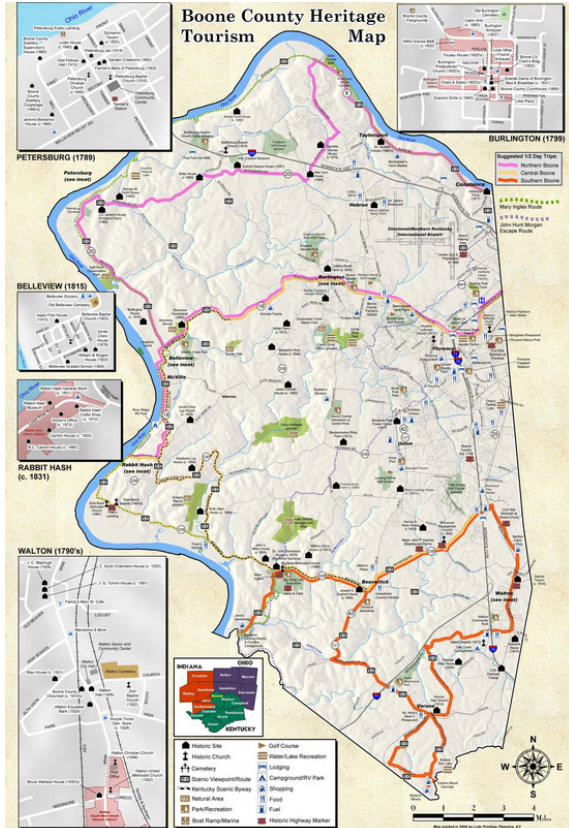
BOONE COUNTY MAPS

BOONE COUNTY OHIO RIVER TRAIL



BOONE COUNTY MAPS

TOURISM



WELCOME TO HISTORIC BOONE COUNTY, KENTUCKY

Boone County Historic District. Boone County's historic downtown area (1780s) is a National Register District with buildings dating as early as the 1820s, including the Old Courthouse, the Old Jail, and the Old Jail. Boone County's historic downtown area is a National Register District with buildings dating as early as the 1820s, including the Old Courthouse, the Old Jail, and the Old Jail.

Flowers Main Street developed in the early 1800s along the main thoroughfare to Northern Kentucky. Lexington was the first town on Dixie Highway. Flowers' "Stringtown" on the Park and was a major part of the historic Lexington area in northern Boone County. Stringtown on the Park has many older buildings, including the Old Courthouse, the Old Jail, and the Old Jail. Boone County's historic downtown area is a National Register District with buildings dating as early as the 1820s, including the Old Courthouse, the Old Jail, and the Old Jail.

Walton's Main Street is the heart of this city in western Boone County. Located in the 1790s and named Walton in 1848, Walton is a small town with many historic buildings, including the 1790s Chandler House, the 1790s Walker House, the 1790s Chamber House, and the South Main Street Historic District. A great time to visit is during the annual Walton's Main Street Festival, which is held in the town square on the second Saturday of each month. Walton's Main Street is a National Register Historic District with buildings dating as early as the 1790s, including the Old Courthouse, the Old Jail, and the Old Jail.

Big Bone Lick State Park (1916-1922) is Boone County's most significant historic site. The park includes a museum and gift shop. Discovered in 1783, the park is a National Historic Landmark. The park is a National Historic Landmark with buildings dating as early as the 1780s, including the Old Courthouse, the Old Jail, and the Old Jail.

Rabbit Hash is Boone County's most celebrated town. The town's historic downtown area is a National Register Historic District with buildings dating as early as the 1820s, including the Old Courthouse, the Old Jail, and the Old Jail. Rabbit Hash is a National Historic Landmark with buildings dating as early as the 1820s, including the Old Courthouse, the Old Jail, and the Old Jail.

CELEBRATING HERITAGE SINCE 1789

HERITAGE TOURISM MAP

of BOONE COUNTY KENTUCKY

This map highlights various historical sites and landmarks across Boone County, Kentucky. Key locations include:

- Petersburg (1789):** A major settlement in the northern part of the county.
- Bellevue (1810):** A site in the western part of the county.
- Rabbit Hash (c. 1831):** A site in the central part of the county.
- Walton (1790's):** A site in the southern part of the county.

Other Attractions

Boone County's rich heritage and natural beauty are complemented by many other attractions, including the National Register Historic District, the Old Courthouse, the Old Jail, and the Old Jail. Boone County's historic downtown area is a National Register District with buildings dating as early as the 1820s, including the Old Courthouse, the Old Jail, and the Old Jail.

Natural Resources

With over 100 miles of shoreline in Boone County, the Ohio River is Boone County's most important natural resource. The river is a National Historic Landmark with buildings dating as early as the 1780s, including the Old Courthouse, the Old Jail, and the Old Jail.

Spill Rock Conservation Park (1966-1967) is Boone County's most important natural resource. The park is a National Historic Landmark with buildings dating as early as the 1780s, including the Old Courthouse, the Old Jail, and the Old Jail.

Boone County Arboretum at Central Park (1966-1967) is Boone County's most important natural resource. The park is a National Historic Landmark with buildings dating as early as the 1780s, including the Old Courthouse, the Old Jail, and the Old Jail.

CELEBRATING HERITAGE SINCE 1789

EAST

WEST

