

[Like](#)[Tweet](#)[Pin](#)[in](#)

The mission of the Boone County Conservation District (BCCDKY) is to promote the protection and wise use of natural resources through education and service to the citizens of Boone County. To learn more about what we do, visit bccdky.org or stop by our office to say hello!

In this issue...

- [Education](#)
 - [Soil](#)
 - [Water](#)
 - [Natural Areas](#)
 - [Upcoming Events](#)
-

Education

Education Grants for Schools

Last Spring, we awarded educational grants to Goodridge Elementary and Boone County High School to plant trees and pollinator gardens on school grounds. [Check out our website for photos!](#) We were also busy teaching lessons on storm water, tree



identification, and local agriculture to many other schools around the county.

Boone County High School

If you know a teacher looking for innovative ways to engage your students, please contact Susan Brown at susanbrown@bccdky.org.

STEM Day Out

This summer, BCCDKY is a host site for Northern Kentucky Chamber of Commerce's STEM Day Out. We will be using Middle Creek Park as an outdoor classroom, showing what the Conservation District works hard to protect: our environment. The kids will explore the creek's resources, hike on the trail with an expert, and create a take-home craft to use in their own backyard! Registration is now open through July 12th [here](#).



River Sweep at Sperti Park

Family Programs

BCCDKY has partnered with Boone County Parks Department to host at least one outdoor family program each month. So far this year, families of all ages have enjoyed geocaching, searching for macroinvertebrates, and exploring the natural areas of Boone County! For a full list of upcoming programs, visit our [Calendar of Events](#). Registration is recommended, and all ages are welcome.

Thanks to all of the families, educators and volunteers who made 2018's Conservation Kids Camp a Success! We had a great time and hope to see you all again next year.

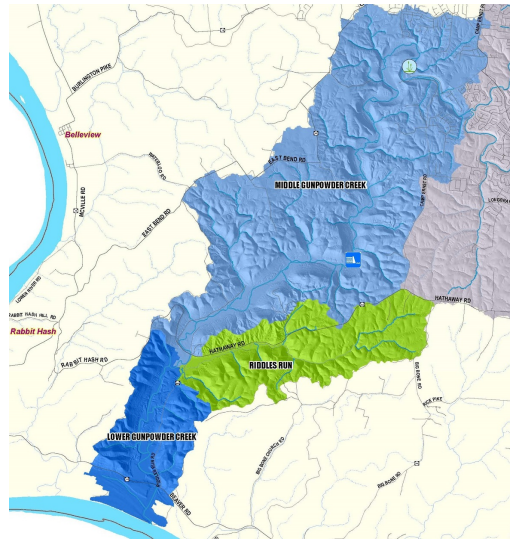


Group Paddlefish

Soil

National Water Quality Initiative (NWQI) Program

BCCDKY is taking part in a national initiative to improve water quality. Through this program, landowners in Lower Gunpowder Creek are eligible for technical and financial support to improve their soil erosion and water quality. Over 20 landowners and agricultural producers have already taken advantage of this program to enroll in State Cost Share and the Environmental Quality Incentive Program. If you live in the Lower Gunpowder Creek Watershed and want to learn more about the [NWQI Program](#), call our office and ask for J.T. McMullen or email jtmcmullen23@gmail.com.



NWQI Map

Landowner Services

Do you have a farm, forest, or stream on your property? We offer [equipment rental](#) to improve your land, as well as technical assistance opportunities. Programs such as State Cost Share, Environmental Quality Improvement Program, and Farm Dump Removal provide technical and financial support for erosion and runoff control, soil quality, and more. Visit our [Landowner Services page](#) or call our office for more information.

Water

Environmental Academy & BCCDKY Intern

Each year, we receive help with our Watershed Initiatives from the Environmental Academy at Thomas More College Biology Field Station, under Dr. Christopher Lorentz. This year, we are working with Jessi Urichich and Tyler Sansom from Thomas More College! This help allows us to continue our research in Gunpowder and Woolper Creek Watersheds, analyzing the streams, detention basins, and wetlands in place.

This year, we are grateful to have an additional intern, previous scholarship

recipient Bryce Wade!

"So far this year, I have been helping BCCDKY conduct stream sampling. This includes macroinvertebrate sampling, chemical sampling, and hydromods. I also helped prepare for Conservation Kids Camp, conduct a Bio Blitz at Boone Cliffs, and helped establish a project on [iNaturalist](#)."

Watershed Initiatives - Gateway Stormwater Improvements

This past week, we broke ground on the stormwater improvement project at Gateway Boone Campus. This project will include a swale stabilization, two detention basin retrofits, and native vegetation installation. This will help filter stormwater during rain events.

To read about these projects and more, visit our [Water Resources](#) page!

Natural Areas



Red Mite

Plan 2040

Have you read over *Plan 2040* yet? The county recently released this plan, with areas of focus in 'Environment' and 'Natural & Cultural Resources' - both areas we already work hard in!

To learn more about *Plan 2040*, click [here](#). To learn more about what we can do for *Plan 2040*, click [here](#).

Upcoming Events

For event details and registration information, visit our [Calendar Of Events](#)!

July 8th, 9th, 10th: KACD Convention in Owensboro, KY

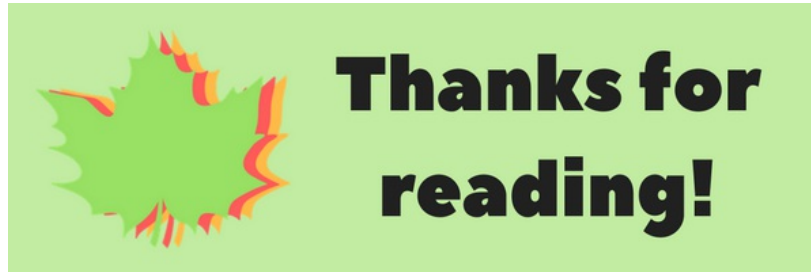
July 16th: Board Meeting

July 18th: STEM Day Out

July 19th: Meet a Tree

July 28th: Family Nature Day

August 20th: Board Meeting



©2018 Boone County Conservation District | 6028 Camp Ernst Road

[Web Version](#)

[Preferences](#)

[Forward](#)

[Unsubscribe](#)

Powered by
[GoDaddy Email Marketing](#)®